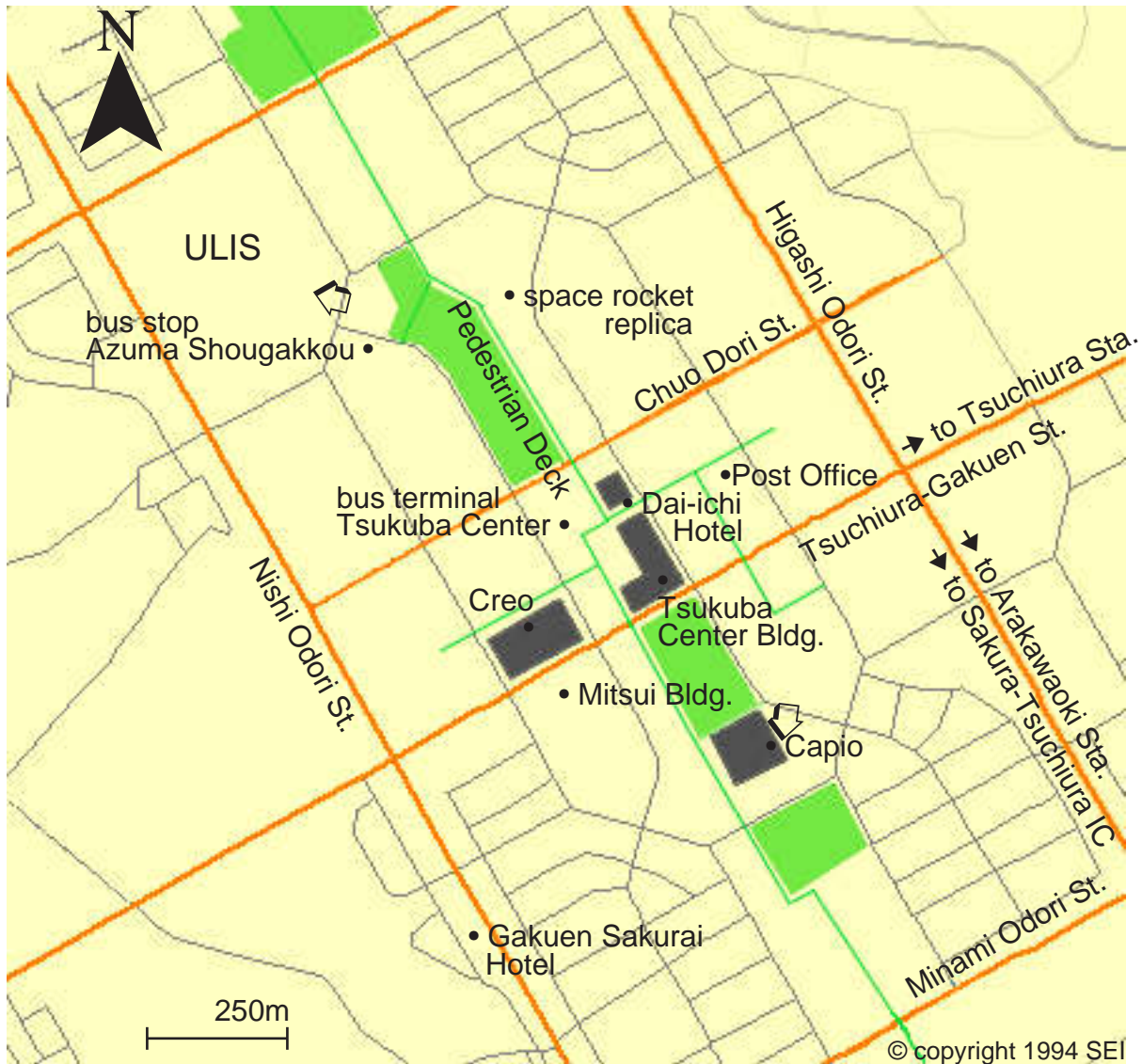


ISDL '97
Capiro/ULIS Vicinity Map



note:

- 1) "Tsukuba Center" is the bus terminal where the Highway Bus from Tokyo station / Narita Airport will arrive.
- 2) Green lines in this map are Pedestrian Deck.
- 3) "Creo" is a department store. There are kinds of restaurants in the 6th floor of it.
- 4) "Azuma Shougakkou" is the bus stop where the bus from JR Tsuchiura/Arakawaoki station will make brief stop.
- 5) Space rocket replica is a good landmark. It is lit up in every night.